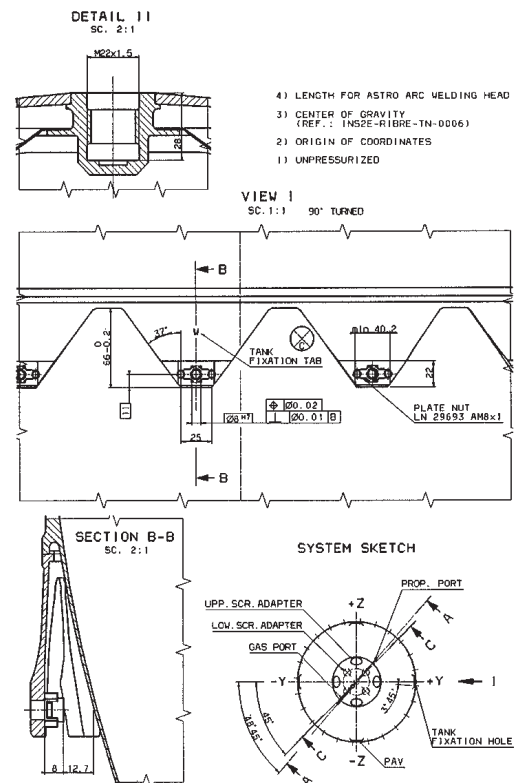
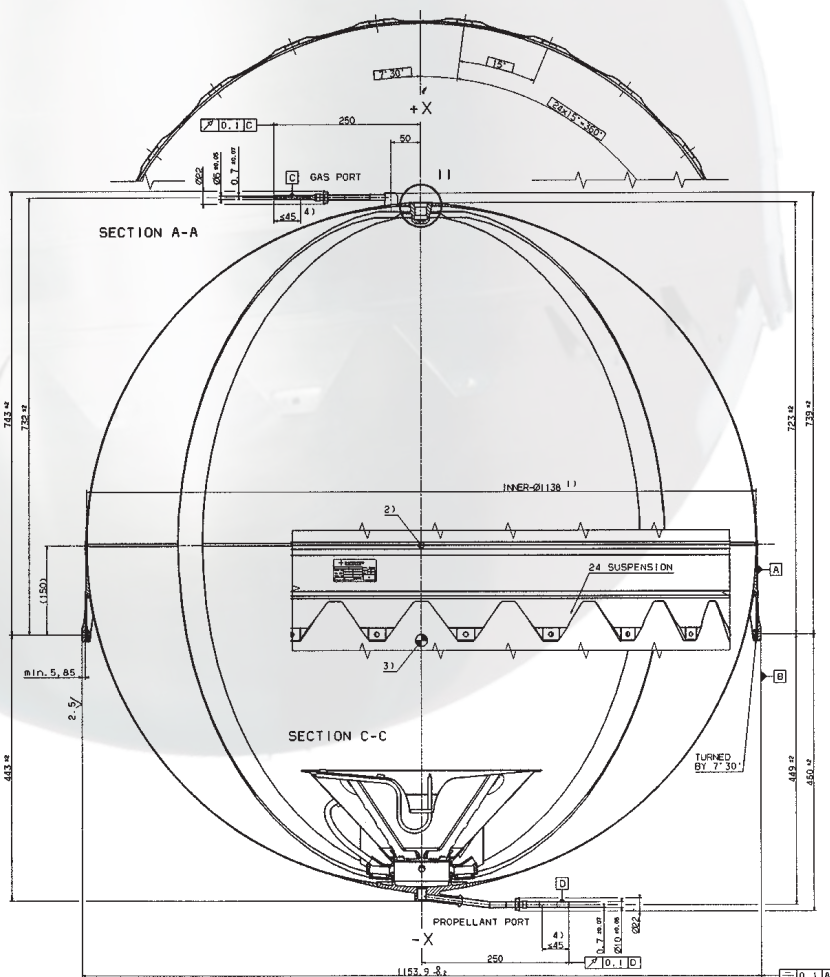
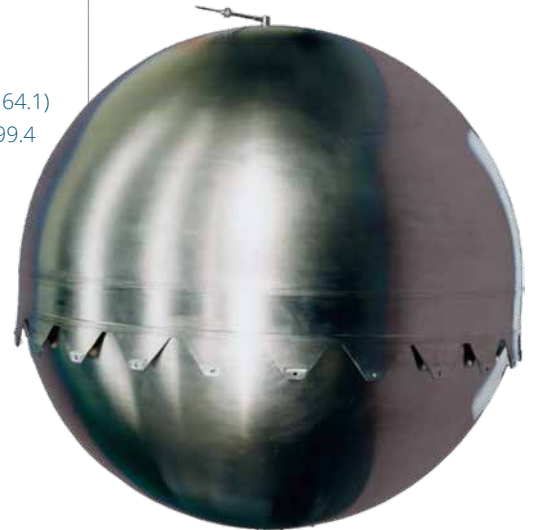


SURFACE TENSION PROPELLANT TANK OST 23/0

Surface Tension Propellant Tank OST 23/0

Tank Net Volume	769 Litres
Propellants	MON respectively MMH
Geometrical Shape	Spherical
Maximum Expected Operating Pressure (MEOP)	17.5 bar
Proof Pressure (1.5 x MEOP)	26.25 bar
Burst Pressure (2.0 x MEOP)	35.0 bar
Interface Fixation	24 Suspension Tabs with floating nuts M8 x 1 (e.g.)
Materials	
- Pressure Vessel	Ti6Al4V STA (3.7164.7)
- Suspension/Ports	Ti6Al4V (3.7164.1)
- PMD	Ti99.4 (3.7034.1) and Ti6Al4V (3.7164.1)
- Screens	304L (1.4306); qualified also for Ti99.4 (3.7025.1)
Tank Mass	31.7 kg
Project Involvement	Insat-2E



Pressurant Gas: Helium (He) or Nitrogen (N₂)
 Maximum Expected Operating Pressure (MEOP): 17.50 bar
 Proof Pressure (1.5 x MEOP): 26.25 bar
 Burst Pressure (2.0 x MEOP): 35.00 bar