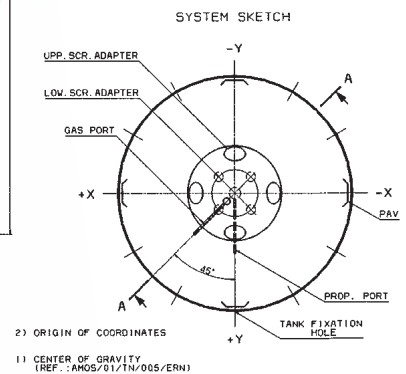
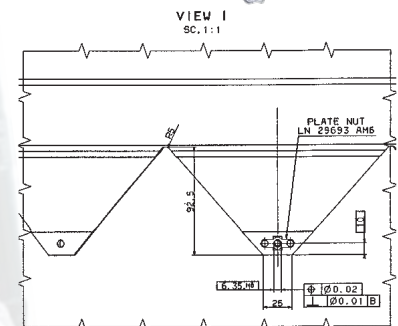
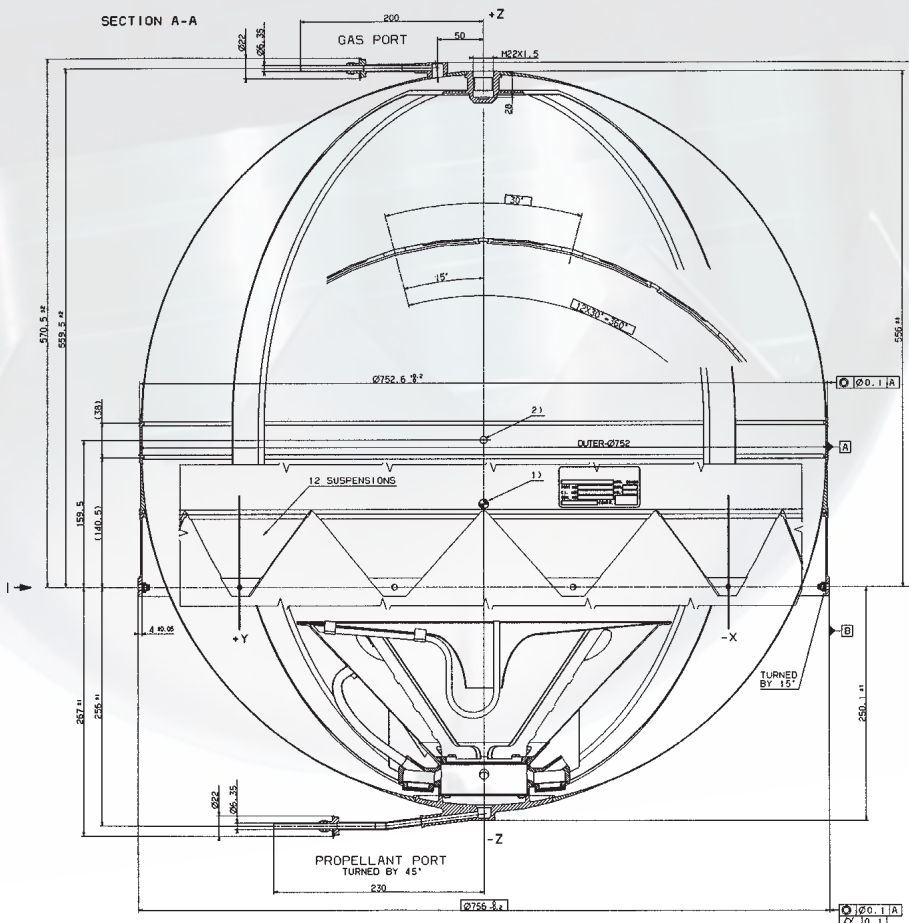


SURFACE TENSION PROPELLANT TANK OST 21/0

Surface Tension Propellant Tank OST 21/0

| | |
|---|--|
| Tank Net Volume | 235 Litres |
| Propellants | MON respectively MMH |
| Geometrical Shape | Spherical with a cylindrical intersection |
| Maximum Expected Operating Pressure (MEOP) | 22.0 bar |
| Proof Pressure (1.5 x MEOP) | 33.0 bar |
| Burst Pressure (2.0 x MEOP) | 44.0 bar |
| Interface Fixation | 12 Suspension Tabs with floating nuts M6 x 1 (e.g.) |
| Materials | |
| - Pressure Vessel | Ti6Al4V STA (3.7164.7) |
| - Suspension/Ports | Ti6Al4V (3.7164.1) |
| - PMD | Ti99.4 (3.7034.1) and Ti6Al4V (3.7164.1) |
| - Screens | 304L (1.4306); qualified also for Ti99.4 (3.7025.1) |
| Tank Mass | 16 kg |
| Project Involvement | Amos |



Pressurant Gas: Helium (He) or Nitrogen (N₂)
 Maximum Expected Operating Pressure (MEOP): 22.0 bar
 Proof Pressure (1.5 x MEOP): 33.0 bar
 Burst Pressure (2.0 x MEOP): 44.0 bar