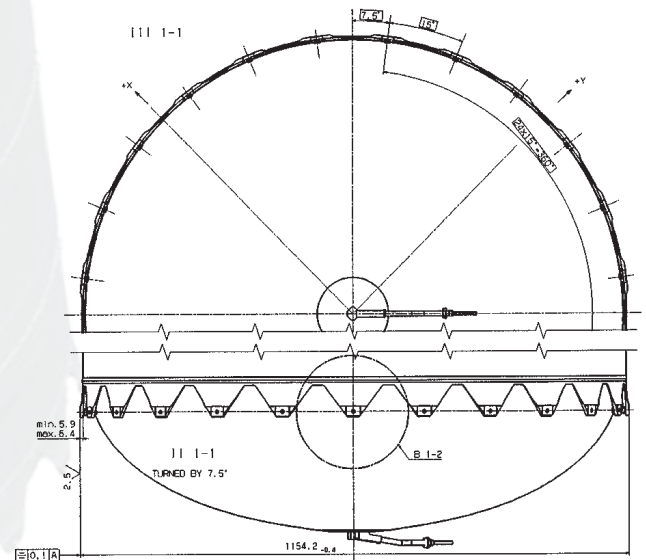
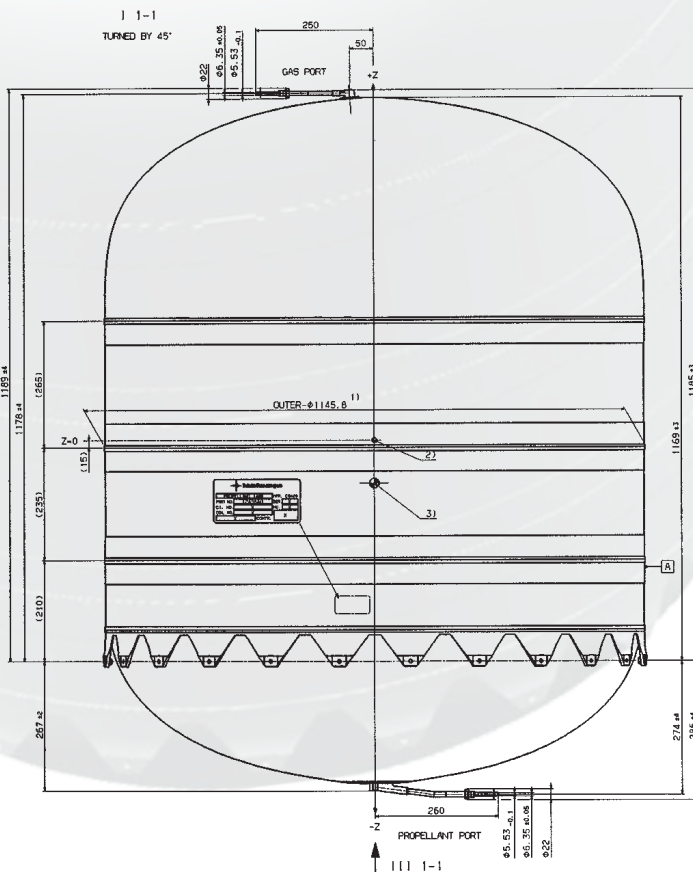


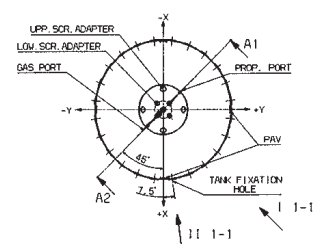
# SURFACE TENSION PROPELLANT TANK OST 24/0

## Surface Tension Propellant Tank OST 24/0

<b>Tank Net Volume</b>	1207 Litres
<b>Propellants</b>	MON respectively MMH
<b>Geometrical Shape</b>	Cassini Domes with cylindrical intersection
<b>Maximum Expected Operating Pressure (MEOP)</b>	19.5 bar
<b>Proof Pressure (1.25 x MEOP)</b>	24.38 bar
<b>Burst Pressure (1.5 x MEOP)</b>	29.25 bar
<b>Interface Fixation</b>	24 Suspension Tabs with floating nuts M10 x 1.25
<b>Materials</b>	
- Pressure Vessel	Ti6Al4V STA (3.7164.7)
- Suspension/Ports	Ti6Al4V (3.7164.1)
- PMD	Ti99.4 (3.7034.1) and Ti6Al4V (3.7164.1)
- Screens	304L (1.4306); qualified also for Ti99.4 (3.7025.1)
<b>Tank Mass</b>	52.5 kg
<b>Project Involvement</b>	Astra 1K



SYSTEM SKETCH



- MATERIALS:**
- CASSINI DOMES : 3.7164.7
  - INTERMED. RING : 3.7164.7
  - SUSPENSION : 3.7164.1
  - SUMP BOTTOM : 3.7164.7
  - PORTS (1/F) : 3.7164.1
- 3) CENTER OF GRAVITY (REF.: ASTRA-RIBRE-TN-0001)
- 2) ORIGIN OF COORDINATES
- 1) UNPRESSURIZED