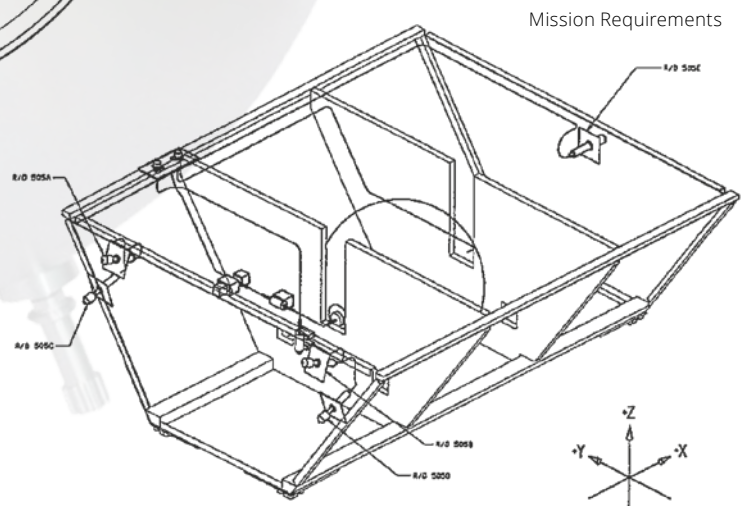
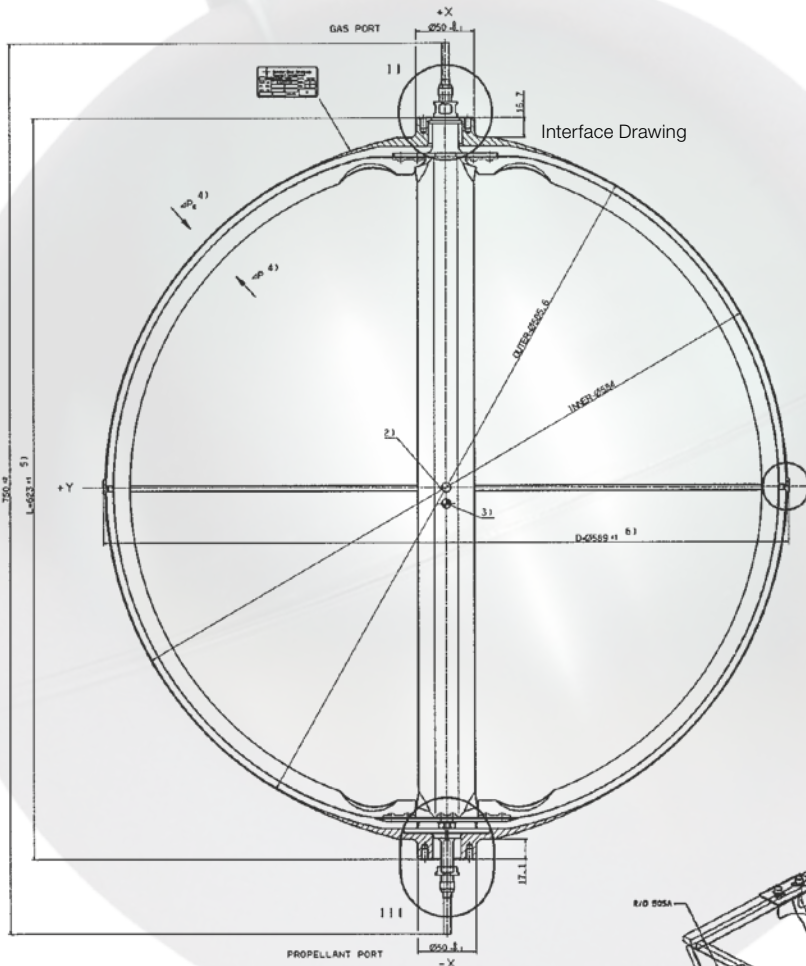
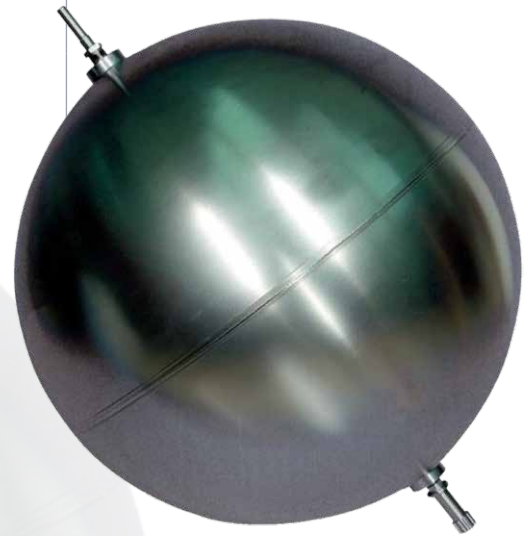


SURFACE TENSION TANK OST 31/0

Surface Tension Tank OST 31/0

Tank Net Volume	104 to 177 Litres
Max. Propellant Volume	78 Litres (Blow Down 4:1)
Propellant	Hydrazine (N ₂ H ₄)
Pressurant Gas	Helium (He) or Nitrogen (N ₂)
Maximum Expected Operating Pressure (MEOP)	24.6 bar
Proof Pressure (1.5 x MEOP)	36.9 bar
Burst Pressure (2.0 x MEOP)	49.2 bar
Interface Fixation	Polar Mounting, Rigidly Fixed at Propellant Port Boss Side
Materials	
- Pressure Vessel	Ti6Al4V STA (Hemispheres 3.7164.7)
- Gas & Propellant Ports	Ti6Al4V (3.7164.1)
- Propellant Management Device	All Titanium
Tank Mass	≤ 6.85 kg
Project Application	Globalstar



- Propellant Pumping towards the Propellant Port
- Steady State Pumping Rate of 2.0 cm³/s against an Acceleration Level of 1x10⁻³ g₀ (g₀ = 9.81 m/s²)
- Expulsion of higher Flow Rates during 4 Thruster Firing DV - Manoeuvre
- Expulsion for Attitude Control Manoeuvres